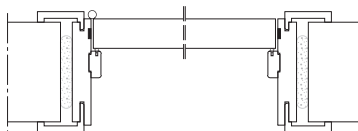
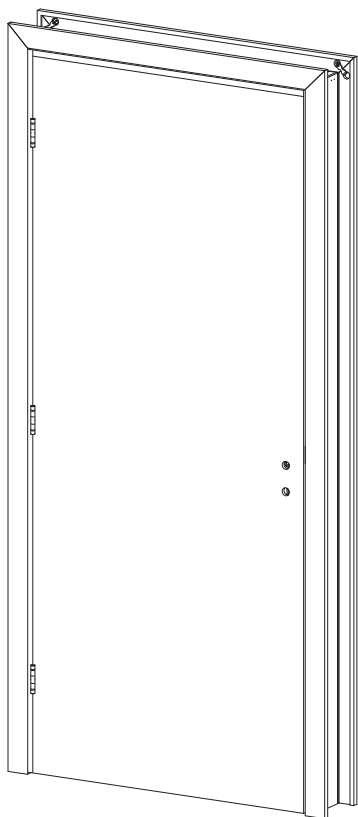


EN **ASSEMBLY AND FITTING INSTRUCTIONS PORTARO® MK2  
FD30 AND NON-FIRE OPTIONS**



FD30 OPTION:



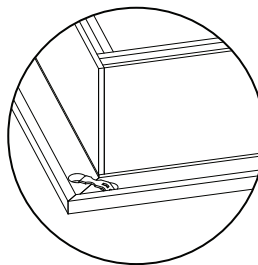
NON-FIRE OPTION:



**!** ATTENTION: Being a fully finished product, Portaro® door kit assembly and fitting should not be started before the completion of all the exterior and interior decorating - namely fixing the roof, fitting of windows, glass, floor and wall painting - and the internal fabric of the building is fully dry. The door kit (door package and frame package) should be stored in a horizontal position using a minimum of 3 supports underneath, evenly spaced at length and full width.

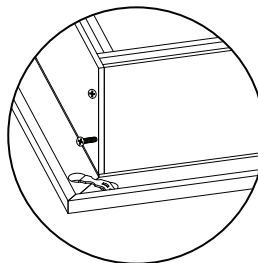
STORAGE AND INSTALLATION: Doors and door frames should be stored and installed in environmental conditions where the moisture content is between 40% and 60% and where there is good air circulation. Temperatures must remain between 19°C and 25°C. Failure to adhere to these requirements may cause damage and material degradation.:

NOTE: When using an electric screwdriver, ensure care is taken to avoid over-tightening fixings.



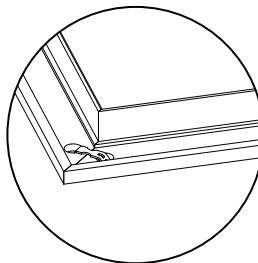
1 - CONNECTION BETWEEN JAMB AND HEAD

Unpack the frame head and jambs and place them over the cardboard base making sure they are perfectly aligned and levelled. Fix the metallic clips into the holes of fixed architraves and tighten the plastic biscuits by means of a screwdriver.



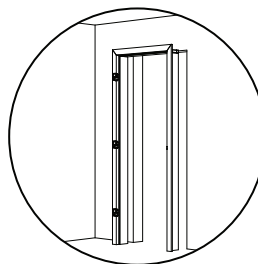
2 - FIXING THE HEAD TO THE JAMB

Fit the screws into the holes and tighten the jamb against the head correctly. Ensure alignment of groove for loose architrave.



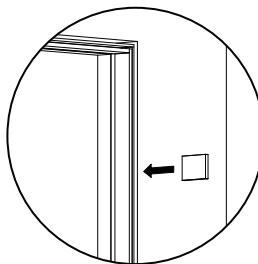
3 - SETTING UP THE REMOVABLE ARCHITRAVE (WHERE APPLICABLE)

Unpack the removable architraves and place them over the cardboard base making sure they are perfectly aligned and levelled. Fix the metallic clips into the holes of removable architraves and tighten the plastic biscuits by means of a screwdriver.



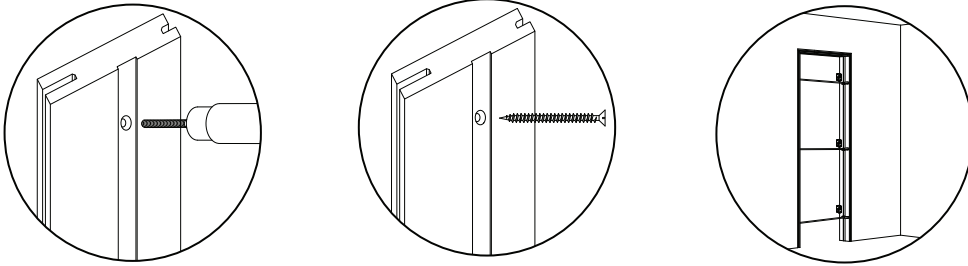
4 - FIXING THE DOOR FRAME INTO THE CONSTRUCTION OPENING

Check the dimensions of the opening. Place the door frame into the opening. Raise the jambs from the floor as needed to compensate for any floor unevenness.



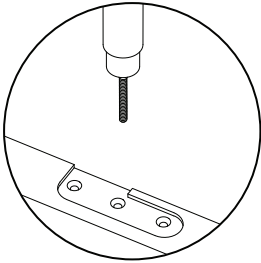
Depending on the gap between wall and jambs, wooden packers should be used through which the jambs can be securely attached to the wall. Packers should be used at the position of the hinges.

#### 5 - IMMOBILISING THE FRAME



Drill the frame in the position of the wooden packers. The wall must also be drilled exactly in the same position. In the case of concrete walls, a wall plug should be inserted in the drilled hole to ensure the proper fixing of the frame.

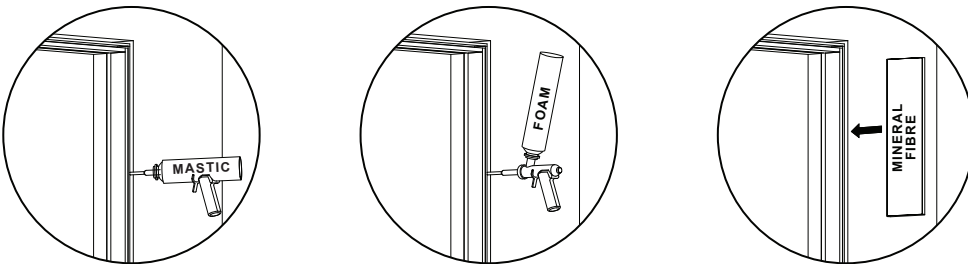
The fixings kit includes 9 screws and raw plug to be used in concrete walls. Tighten the screws using a square head screwdriver and check for levelness in order to see if any adjustment is needed. Where PU foam is to be used fixing braces may be placed to better immobilize the frame. Care must be taken not to damage the frame with the fixing braces. Fixing braces may be placed where PU foam is to be used.



#### 6 - PLACEMENT OF THE DOOR

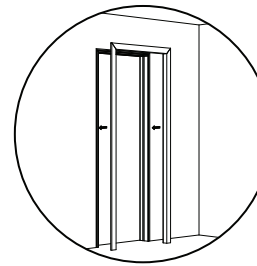
Pre-drill the hinges recesses and tighten with a suitable screwdriver. Shut the door and use it as a template to check if any adjustments are needed. The gaps between the door and the frame must be between 3mm and 4mm along the whole perimeter.

#### 7 - SEALING TO STRUCTURAL OPENING (FD30 OPTION)



The door frame to structural opening gap must be protected using one of the following methods, using fire approved and tested products:

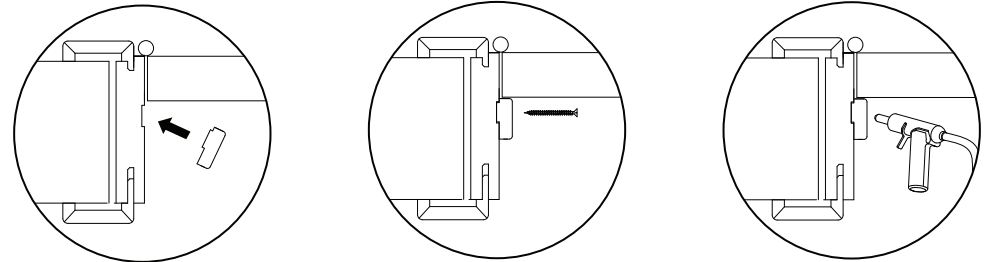
- Gaps up to 10mm must be sealed on both sides with a 10mm depth of acrylic intumescent mastic.
- Gaps between 10mm and 20mm must be tightly packed with mineral fibre or filled with PU fire stopping foam and, in both cases, capped on both sides with a 10mm depth of acrylic intumescent mastic.



#### 8 - FIT THE REMOVABLE ARCHITRAVE

Push fit the architrave into the frame. It is important to keep the architrave removable in case any adjustment is needed after the installation. Glue is not recommended but a small amount of silicon may be used to improve stability, if needed.

#### 9 - FIXING THE DOOR STOPS INTO THE FRAME



With the door shut, place the door stops and ensure that they are just touching the door and not pressing against it. Next, fix the door stops in the frame by means of a nail gun or small head screws. Fill the holes made by the nail gun or screws in the door stops by applying wax filler of the same colour as the door veneer. This is available from DIY stores.

#### 10 - HANDLES

When applying the handle, care should be taken not to over tighten the fixing screws, otherwise this may affect the proper functioning of the lock.

#### 11 - REMOVING OR REPLACING THE PORTARO®

If the frame has to be removed or replaced, you should follow these assembly instruction steps in reverse order.

**THIS INFORMATION REPLACES ANY PREVIOUSLY SUPPLIED INSTRUCTIONS AND WE RESERVE THE RIGHT TO MAKE CHANGES AT ANY TIME. TO OBTAIN MORE DETAILED INFORMATION, PLEASE CONTACT:**

VICAIMA Ltd - Tel.: +44 (0) 1793 532 333 • E-mail: [info@vicaima.com](mailto:info@vicaima.com) • [WWW.VICAIMA.COM](http://WWW.VICAIMA.COM)

JAN 2015