

20 Min NP w/out HOSE-STREAM

TECHNICAL SHEET

vicaima
UNEXPECTED HARMONY

GENERAL DESCRIPTION

20 minute fire resistant door slab, single swing and pairs.
Glazing and grooved (embossed lines) models available.

TESTED

To UL 10b, NFPA 252

DOOR FEATURES

Solid core, 20 minute fire door with nominal thickness of 1-3/4"
Edge banded options in softwood, lipping in solid wood or softwood edge banded
Additional edge sealing not required
Neutral pressure (NP)

SLAB SIZE

Largest single swing 3'6" wide x 8'0" high
Largest standard pairs 6'0" wide x 8'0" high

FINISHES

Naturdor® - Real wood veneer or Stained real wood veneer.
Dekordor® - HD (Heavy Duty, continuous pressure laminate) or SD (Standard Duty, finish foil)
Lacdor - Satin white or white lacquered

FRAME OPTIONS

Category C – Standard/Proprietary, metal or timber frame
Category H – Smoke & Draft Control Gasket

GLAZING OPTIONS

Listed metal vision kits with listed ceramic glazing or wood bead vision Kit, with matching finish and a listed temperature resistant glazing.
Maximum Clear Glazing Area = 1,531 sq. in.
Maximum Clear Glazing Width = 25"
Maximum Clear Glazing Height = 61-1/4"
Multiple lights are permitted provided maximum area/dimensions are not exceeded

CUSTOMIZE YOUR DOOR

Listed hardware
Electronic mortise locks, , such as, Vingcard Essence
Listed surface mounted closers
Listed viewers
Surface mounted edge guards may be applied
Kick plates and protection plates may be applied
Molding as a plant-on may be applied to one or both faces of the door
Bolts (pairs) – listed surface mounted, extension flush bolts
Bolts (pairs) – listed automatic/manual mortise flush bolts
Metal astragals (Pairs)
Some grooved models (with embossed lines) from Essential Range are available.

NOTE: Door preparations in accordance with NFPA 80



20 Min.



SMOKE &
DRAFT



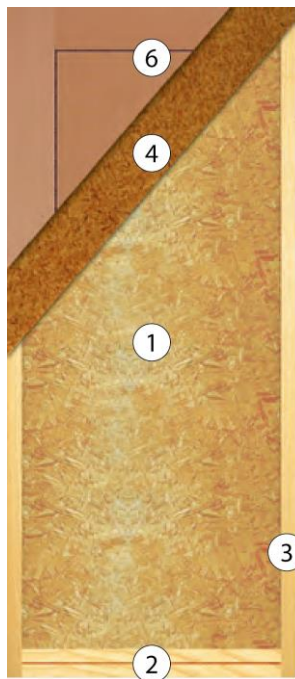
Notes: As we are constantly improving our product range, we reserve the right to make changes without prior notice.

20 Min NP w/out HOSE-STREAM

TECHNICAL SHEET

vicaima
UNEXPECTED HARMONY

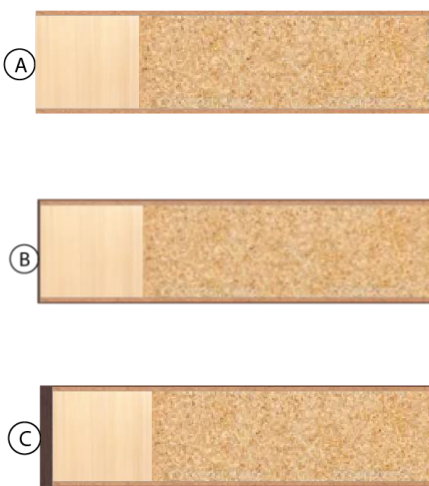
DOOR CONSTRUCTION



KEY

- 1 – Solid core
- 2 – Double top and bottom rail in softwood
- 3 – Stiles in softwood
- 4 – Facing in MDF or hardboard
- 5 – Door finish

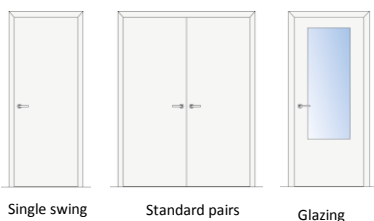
EDGE BANDED OPTIONS



KEY

- A - Softwood
- B – Softwood edge banded
- C – Lipping in solid wood

CONFIGURATIONS



Notes: As we are constantly improving our product range, we reserve the right to make changes without prior notice.