

20 Min PP w/ HOSE-STREAM

TECHNICAL SHEET

vicaima
UNEXPECTED HARMONY

GENERAL DESCRIPTION

20 minute fire resistant door slab, single swing.

EVALUATED TO

UL 10c, NFPA 252, and CAN / ULC S104 with hose-stream

DOOR SLAB

Solid core, 20 minute fire door with nominal thickness of 1-3/4"

Edge banded in softwood, lipping in solid wood or softwood edge banded

Category B – Additional edge sealing required

Positive (PP) and neutral pressure

SLAB SIZE

Largest single swing 3'0" wide x 6'8" high

FINISHES

Naturdor® - Real wood veneer or Stained real wood veneer.

Dekordor® - HD (Heavy Duty, continuous pressure laminate) or SD (Standard Duty, finish foil)

Lacdor - Satin white or white lacquered

FRAME OPTIONS

Category C – Standard/Proprietary, metal or timber frame

Category H – Smoke & Draft Control Gasket

CUSTOMIZE YOUR DOOR

Listed hardware

Listed and labeled surface mounted fire exit devices

Listed surface mounted closers

Listed viewers

Surface mounted edge guards may be applied

Kick plates and protection plates may be applied

Molding as a plant-on may be applied to one or both faces of the door

NOTE: Door preparations in accordance with NFPA 80



FIRE DOOR

20 Min.



SMOKE &
DRAFT

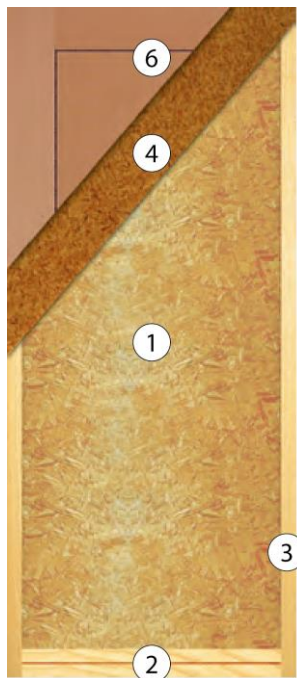


Notes: As we are constantly improving our product range, we reserve the right to make changes without prior notice.

20 Min PP w/ HOSE-STREAM

TECHNICAL SHEET

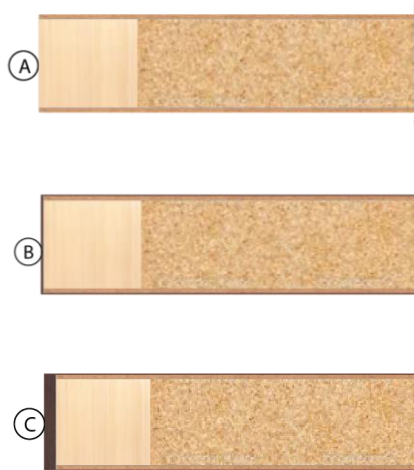
DOOR CONSTRUCTION



KEY

- 1 – Solid core
- 2 – Double top and bottom rail in softwood
- 3 – Stiles in softwood
- 4 – Facing in MDF or hardboard
- 5 – Door finish

EDGE BANDED OPTIONS



KEY

- A - Softwood
- B - Softwood edge banded
- C - Lipping in solid wood

CONFIGURATIONS



Single swing

Notes: As we are constantly improving our product range, we reserve the right to make changes without prior notice.