

# 20 Min PP w/out HOSE-STREAM

TECHNICAL SHEET

**vicaima**  
UNEXPECTED HARMONY

## GENERAL DESCRIPTION

20 minute fire resistant door slab, single swing and pairs.  
Glazing and grooved (embossed lines) models available.

## EVALUATED TO

UL 10c, NFPA 252

## DOOR SLAB

Solid core, 20 minute fire door with nominal thickness of 1-3/4"  
Edge banded options in softwood, lipping in solid wood or softwood edge banded  
Category B – Additional edge sealing required  
Positive (PP) and neutral pressure

## SLAB SIZE

Largest single swing 3'6" wide x 8'0" high  
Largest standard pairs 6'0" wide x 8'0" high

## FINISHES

Naturdor® - Real wood veneer or Stained real wood veneer.  
Dekordor® - HD (Heavy Duty, continuous pressure laminate) or SD (Standard Duty, finish foil)  
Lacdor - Satin white or white lacquered

## FRAME OPTIONS

Category C – Standard/Proprietary, metal or timber frame  
Category H – Smoke & Draft Control Gasket

## GLAZING OPTIONS

Listed metal vision kits with listed ceramic glazing or wood bead vision Kit, with matching finish and a listed temperature resistant glazing.  
Maximum Clear Glazing Area = 1,531 sq. in.  
Maximum Clear Glazing Width = 25"  
Maximum Clear Glazing Height = 61-1/4"  
Multiple lights are permitted provided maximum area/dimensions are not exceeded

## CUSTOMIZE YOUR DOOR

Listed hardware  
Electronic mortise locks, such as, Vingcard Essence  
Listed surface mounted closers  
Listed viewers  
Surface mounted edge guards may be applied  
Kick plates and protection plates may be applied  
Molding as a plant-on may be applied to one or both faces of the door  
Bolts (pairs) – listed surface mounted, extension flush bolts  
Bolts (pairs) – listed automatic/manual mortise flush bolts  
Metal astragals (Pairs)  
Some grooved models (with embossed lines) from Essential Range are available.

NOTE: Door preparations in accordance with NFPA 80



20 Min.



SMOKE &  
DRAFT



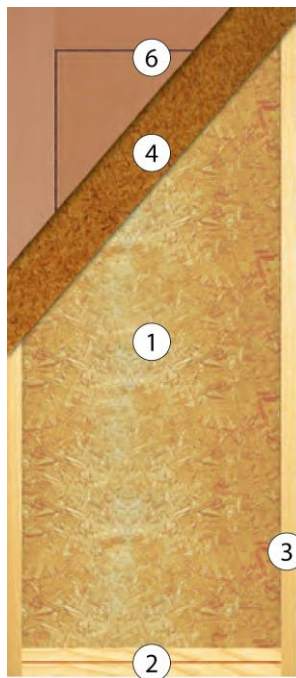
Notes: As we are constantly improving our product range, we reserve the right to make changes without prior notice.

# 20 Min PP w/out HOSE-STREAM

TECHNICAL SHEET

**vicaima**  
UNEXPECTED HARMONY

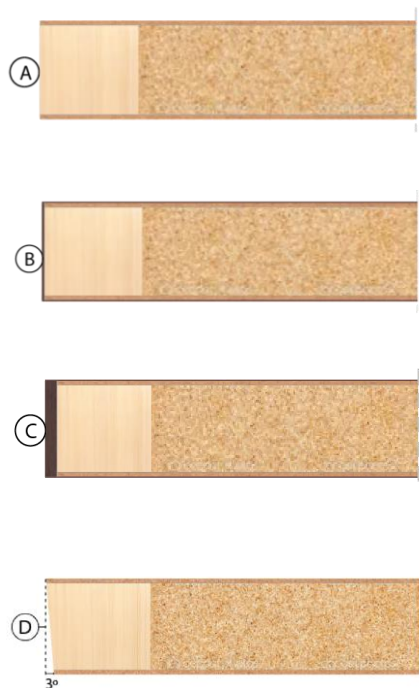
## DOOR CONSTRUCTION



### KEY

- 1 – Solid core
- 2 – Double top and bottom rail in softwood
- 3 – Stiles in softwood
- 4 – Facing in MDF or hardboard
- 5 – Door finish

## EDGE BANDED OPTIONS



### KEY

- A - Softwood
- B – Softwood edge banded
- C – Lipping in solid wood
- D – A,B and C available with lipping bevel

## CONFIGURATIONS



Notes: As we are constantly improving our product range, we reserve the right to make changes without prior notice.