

GENERAL DESCRIPTION

Door, frame and accessories with 60 min fire resistance and acoustic insulation rating up to 34dB.

Glazing options.

Product suitable for installation in places with fire resistance and acoustic insulation requirements.

ACCREDITATION

Fire certification as per BS 476 Part 22.

FD60 rating as per BS 476 PART 22.

Acoustic insulation test as per ISO 10140 and rating as per ISO 717-1.

DOOR

Multi-layered high density chipboard interior with characteristics as per EN 13986.

Chipboard facing, features as per standard EN 13986.

Lippings in dense wood, wood veneer, finish foil or painted to match the facing.

Thickness: 54 mm.

Available in models from the Essential and Exclusive ranges.

FRAME

Moisture resistant MDF jamb, features according to EN 13986.

Adjustable MDF architrave, features according to EN 13986.

Intumescent seals and strips with specifications according to performed test.

FINISHES

Naturdor® - Real wood veneer, Stained real wood veneer or SL (Straight line veneer).

Dekordor® - 3D (Embossed laminate) HD (Heavy Duty, continuous pressure laminate) or SD (Standard Duty, finish foil)

Laccdor - Satin white or white lacquered

IRONMONGERY & OTHERS

Stainless steel CE marked YSE lock for emergency exits.

Stainless steel CE marked YDI lock with interior unlocking.

4" stainless steel CE marked hinges.

Threshold or automatic drop seal for 34dB acoustic insulation.

OPTIONS

Recessing for electronic lock.

Invisible closer or with scissor arm.

Invisible hinges.

Eye viewer.

Anti panic bar.

Glazing option for 33dB acoustic insulation.

Double leaf option for 33dB acoustic insulation.

Anti smoke seal.



FIRE

FD60



ACOUSTIC



THRESHOLD

RW34dB



DROP SEAL

RW34dB



ANTI SMOKE SEAL

ANTI SMOKE



THERMAL TRANSMISSION

1,8 W/m² K



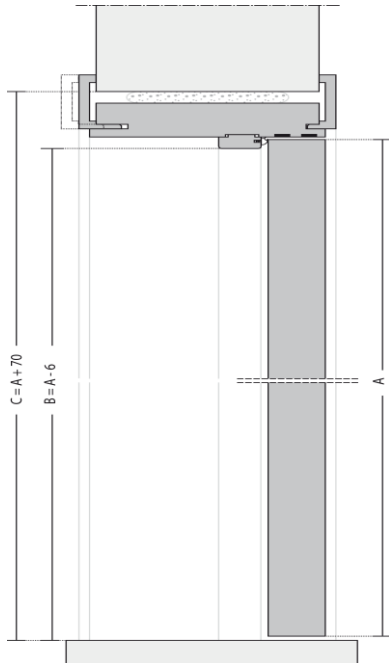
The mark of responsible forestry



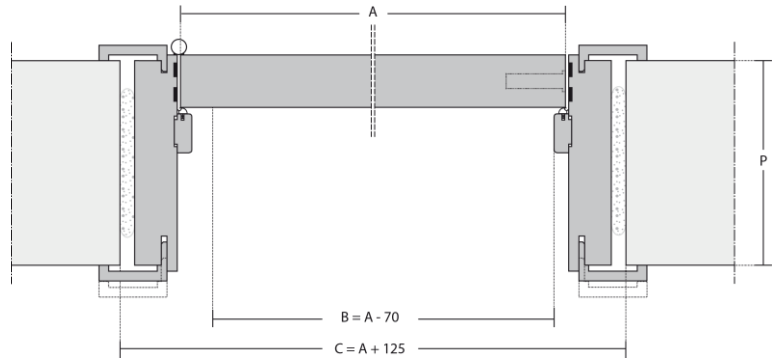
MOBILITY

Notes: As we are constantly improving our product range, we reserve the right to make changes without prior notice.

VERTICAL CUT

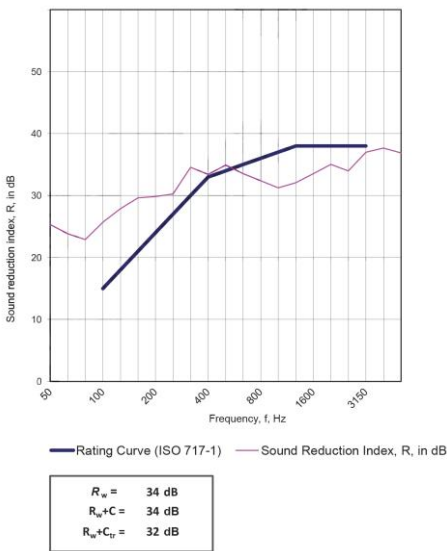


HORIZONTAL CUT

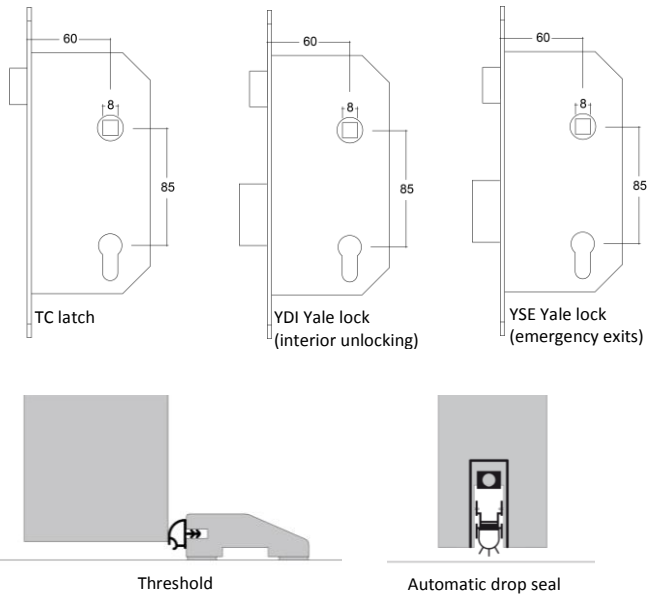


KEY

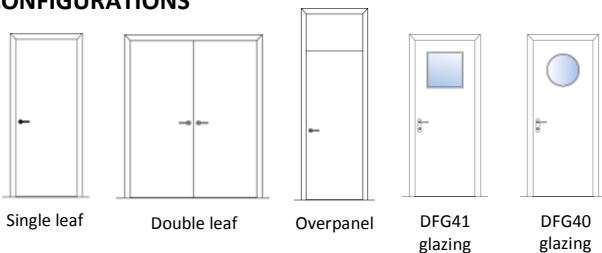
- A** – Door width / height
- B** – Effective clear width / height
- C** – Structural opening
- P** – Frame total width / height



IRONMONGERY AND OPTIONS



CONFIGURATIONS



Notes: As we are constantly improving our product range, we reserve the right to make changes without prior notice.