

**DOORSET GENERAL DESCRIPTION**

Hardwood rebated FSC frame primed engineered hardwood door frame, fire, smoke and acoustic seals, 15 mm deep Oak threshold, Winkhaus Thunderbolt 3-point lock and handle, polished or satin chrome finished ironmongery supplied (where applicable). Heavy duty door construction (HDC), PAS 24:2022 tested, fd30(s). The doorset is Duel Scope certificated door leaf size 926 mm x 2040mmx44mm finish., U value 2.1. An approved door closer must be supplied with the doorset on delivery.

**DOOR CORE**

Solid high density particle board 640 kgs/m3 +/- 20 kgs/m3

**STILES and RAILS**

Double stiles and rails total 70mm (Aprox.) square softwood each edge FSC.

**LIPPINGS (optional)**

6mm (nom) hardwood to long edges (concealed by face veneer) controlled hardwood.

**IRONMONGERY**

Winkhaus Thunderbolt 3 point lock, (lock and keeps are nickel finish) 3 no s/steel security hinges, Kite marked thumb turn security cylinder with ArmorShield protection and lever handle set, fd30 eye viewer (optional), door chain TS003 (optional), Certifire approved door closer, refer to our quotation.

**FIRE RATING**

FD30 (S) when intumescent seals are fitted to door leaf or door frame/lining as test certification (details on request). Fitted `Q` mark fire plug (BM TRADA)

**ACOUSTICS**

Doorset achieves 32 dB sound reduction supplied with fitted intumescent/acoustic seal including at the threshold. Part `E` compliant. (Refer to lorient catalogue, supplied with 15X4mm `DS` and `Batwing` and LAS8001 drop seal).

**SECURITY TESTED/FIRE CERTIFICATION**

Security tested to PAS 24:2022 and BS EN 6375-1 and fire certification via Warrington Fire, Q Mark fire door Scheme and Duel Scope/SBD approved.

**PACKAGING**

Supplied as a fully assembled doorset, palletized, and protected.



**FD30S**



Note: Illustration represents core construction only and not face finish.



Notes: As we are constantly improving our product range, we reserve the right to make changes without prior notice.

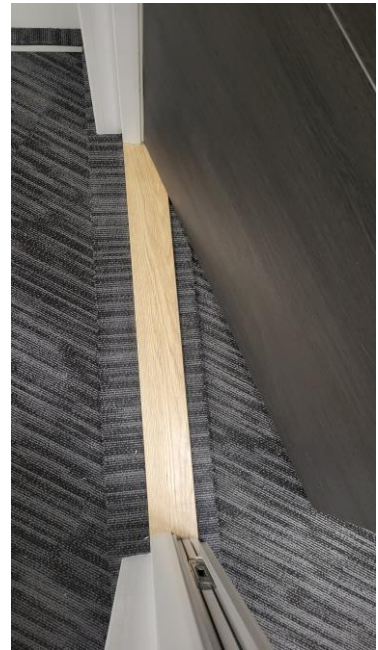
**EASI-FIT LIFTLOCK SBD DOORSET**  
**HDC FD30s FSC DOORS**  
**TECHNICAL DATA SHEET**



Easi-Fit SBD Liftlock



Tested and approved 3 point locking system



Oak hardwood threshold supplied as standard



Automatic Drop Seal



Fire, smoke and acoustic seals

Notes: As we are constantly improving our product range, we reserve the right to make changes without prior notice.