

## GENERAL DESCRIPTION

Door, frame and accessories with 30 min fire resistance and acoustic insulation rating up to 45dB.

Product suitable for installation in places with fire resistance and acoustic insulation requirements.

## ACCREDITATION

Fire certification as per EN 1634-1.

EI30 rating as per EN 13501-2.

Acoustic insulation test as per ISO 10140 and rating as per ISO 717-1.

Thermal transmission coefficient  $U_D=1,2W/(m^2 \cdot ^\circ C)$  according to ISO 10077-1; ISO 10077-2.

## DOOR

Rails and stiles in hardwood, edge banded vertical and top of the door.

Multi-layered acoustic core.

MDF facing, features as per standard EN 13986.

Thickness, 54 mm with rebate.

Available in models from the Essential and Exclusive ranges.

## FRAME

Jamb in high density plywood, features according to EN 13986.

Jamb in solid wood, extension in high density plywood.

Fixed and adjustable architrave in high density plywood.

Fire and acoustic seals 10x4mm and fire seals 10x4mm.

Compression seal.

## FINISHES

Naturdor® - real wood veneer or stained.

Dekordor® 3D - embossed finish design vertical or horizontal.

Dekordor® HD - hard wearing laminate.

Dekordor® SD - decorative foil.

Lacdor - Lacquered finish with approximate RAL colour.

## IRONMONGERY & OTHERS

Stainless steel CE marked

4" stainless steel CE marked hinges.

Threshold and automatic drop seal for 45dB acoustic insulation.

## OPTIONS

Threshold or double automatic drop seal for 44dB acoustic insulation.

Recessing for electronic lock.

Concealed door closer or faced mounted.

Concealed hinges (for frame in solid wood).

Eye viewer.

Anti smoke seal.



FIRE

EI30



ACOUSTIC



DOOR

RW48dB



THRESHOLD AND  
DROP SEAL

RW45dB



THRESHOLD

RW44dB



DOUBLE  
DROP SEAL

RW44dB



THERMAL  
TRANSMISSION

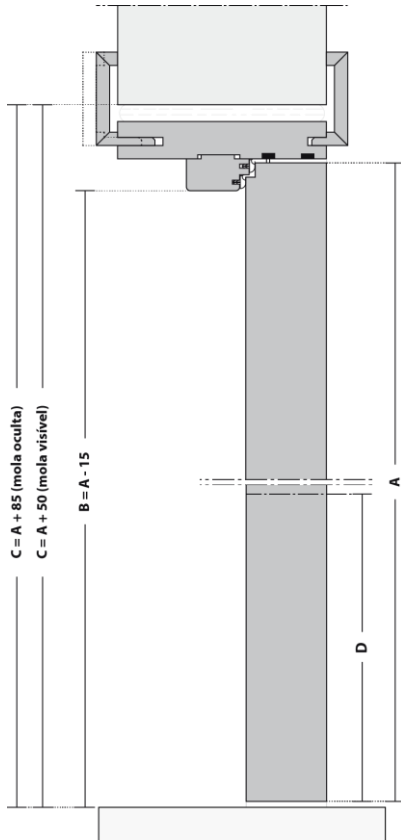
$1,2W/M^2 \cdot ^\circ C$



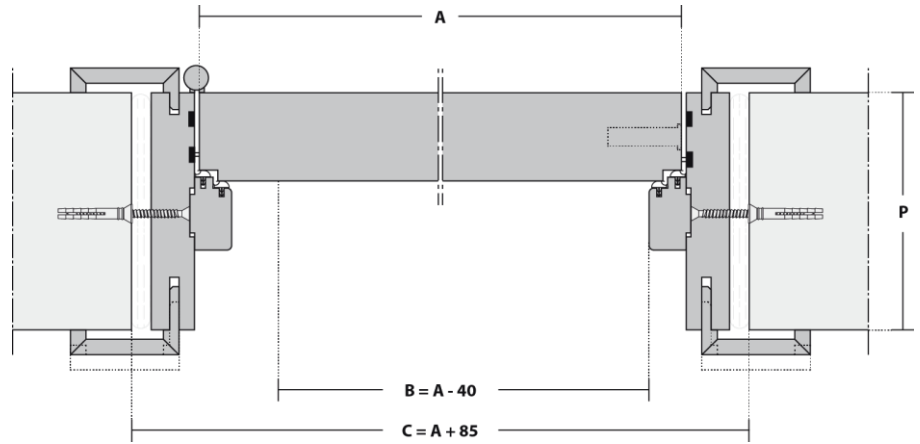
ANTI SMOKE SEAL

ANTI SMOKE

## VERTICAL CUT



## HORIZONTAL CUT

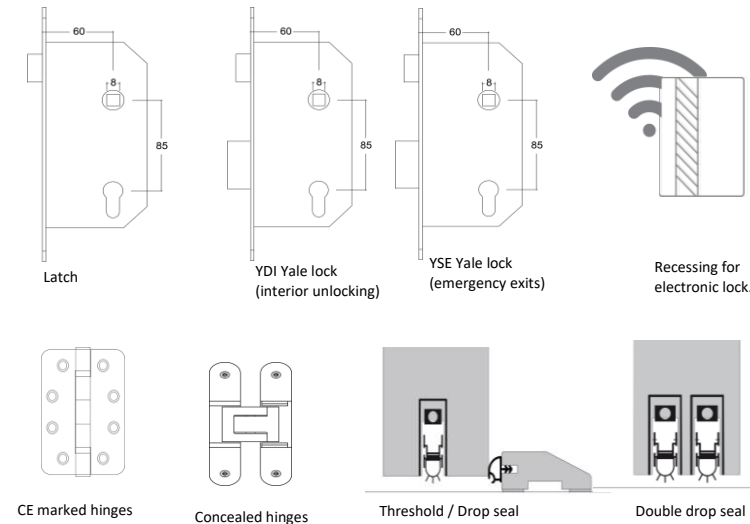
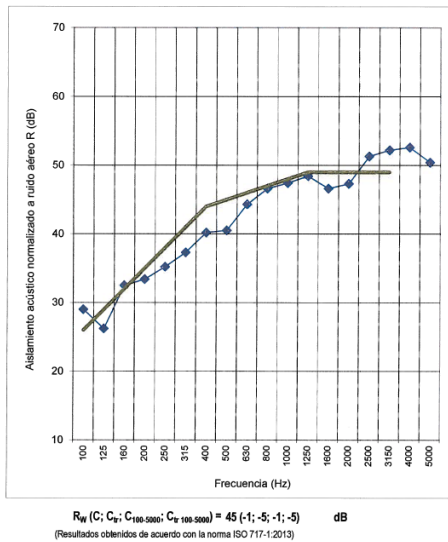


### KEY

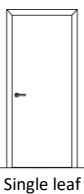
- A – Door width / height
- B – Effective clear width / height
- C – Structural opening
- D – Handle height
- P – Wall thickness

D - HANDLE HEIGHT (mm)	DOOR THICKNESS (mm)	P - WALL THICKNESS / FRAME ADJUSTMENT (mm)
1000	54	$\geq 100$
1050		[- 5 + 10]

## IRONMONGERY AND OPTIONS



## CONFIGURATIONS



Notes: Depending on product features or configurations, dimensions will vary. As we are constantly improving our product range, we reserve the right to make changes without prior notice.