

GENERAL DESCRIPTION

Door, frame and accessories with 60 min fire resistance and acoustic insulation rating up to 43dB. Product suitable for installation in places with fire resistance and acoustic insulation requirements high.

ACCREDITATION

Fire certification as per EN 1634-1.

EI60 rating as per EN 13501-2.

Acoustic insulation test as per ISO 10140 and ISO 717-1.

DOOR

Overall 54mm thick.

Multi-layered acoustic core.

Rails and stiles in hardwood, vertical edge banded.

Facing in MDF, features as per standard EN 13986.

FRAME

Jamb in solid wood, 28mm thick, extension in high density plywood.

Fixed and adjustable architrave in high density plywood.

Double intumescent seals 15x4mm

Compression seal.

FINISHES

Naturdor® - real wood veneer or stained.

Dekordor® 3D - embossed finish, vertical and horizontal design.

Dekordor® HD - hard wearing laminate.

Dekordor® SD - decorative foil.

Lacdor - Lacquered finish with approximate RAL colour.

IRONMONGERY

Stainless steel CE marked

Stainless steel CE marked hinges.

Double drop seal or threshold.

OPTIONS

Door closer face mounted.

Recessing for electronic lock.

Eye viewer.

Anti-smoke seal.



EI60

FIRE



ACOUSTIC



RW45dB

DOOR



RW43dB

THRESHOLD



RW43dB

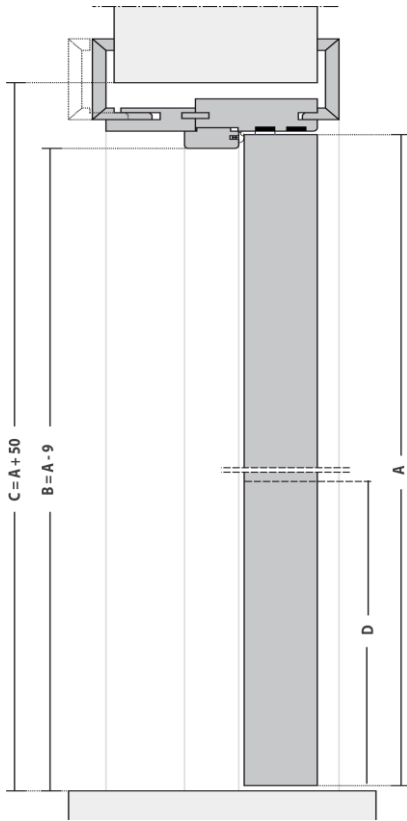
DOUBLE DROP SEAL



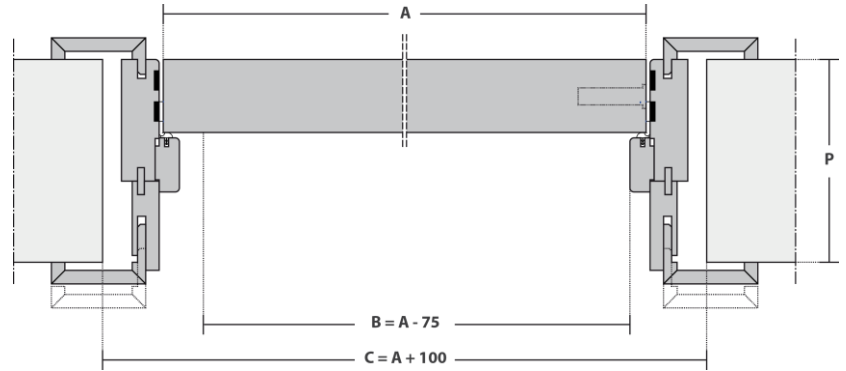
ANTI SMOKE

ANTI SMOKE SEAL

VERTICAL CUT



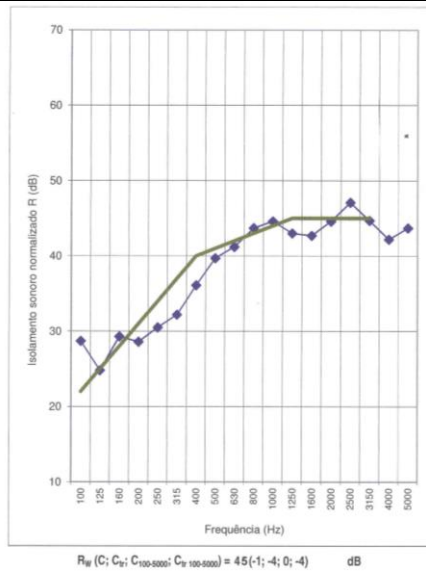
HORIZONTAL CUT



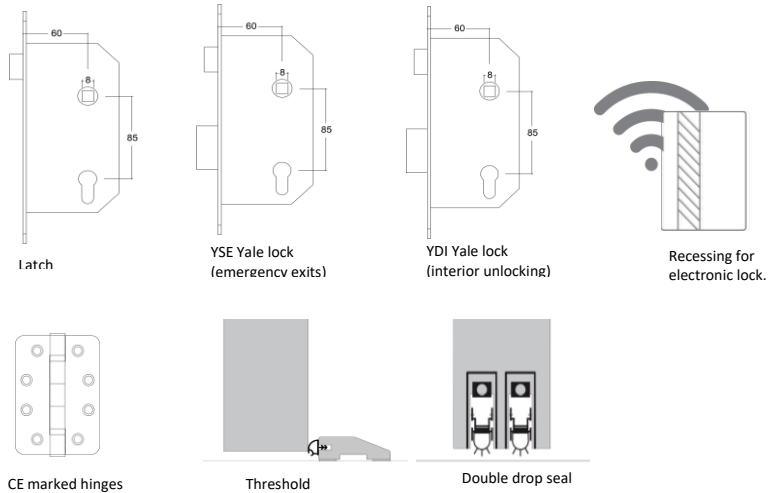
KEY

- A** - Door width / height
- B** - Effective clear width / height
- C** - Structural opening
- D** - Handle height
- P** - Wall thickness

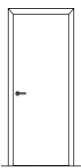
D - HANDLE HEIGHT (mm)	DOOR THICKNESS (mm)	P - WALL THICKNESS / FRAME ADJUSTMENT (mm)
1000	54	≥ 100
1050		$[-5 + 10]$



IRONMONGERY AND OPTIONS



CONFIGURATIONS



Single leaf

Notes: Depending on product features or configurations, dimensions will vary. As we are constantly improving our product range, we reserve the right to make changes without prior notice. The guarantee certificate is an integral part of the technical data sheet, available at www.vicaima.com.