



DEKORDOR[®] HD COLOURS

vicaima 

UNEXPECTED HARMONY

REFRESH YOUR COLOUR PALLETTE

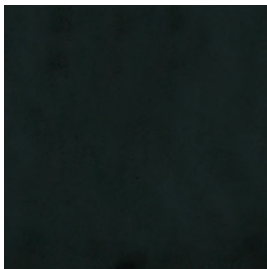
Dekordor® heavy duty (HD) is a continuous pressure laminate finish, which is hard wearing and ideal for more demanding locations.

With these **22 inspiring colours** you can create practical and trendy interiors for a wide variety of applications such as student accommodation, medical, educational, hotels, offices or commercial buildings. As a responsible and environmentally aware manufacturer, Vicaima has these products certified by FSC® (Forest Stewardship Council®), which ensures that they derive from responsibly managed forests and other controlled sources.

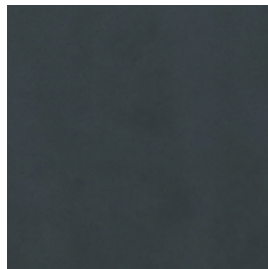
Features and Benefits:

- A wide selection of on-trend colours
- Available as a Portaro doorkit, door and frame in matching finish, or as Easi-Fit doorkit with a white frame
- Performance options: Fire doors, security entrance systems and acoustic solutions
- Flexible configuration and dimensional options: pairs, overpanels, inverse, pivotal, room height and mobility widths
- Also available: glass openings, collision protection areas and self-closing devices

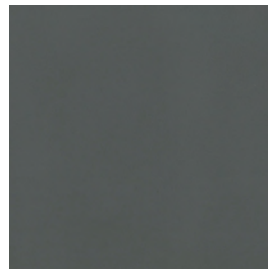
DEKORDOR® HD COLOURS



Carbon Grey



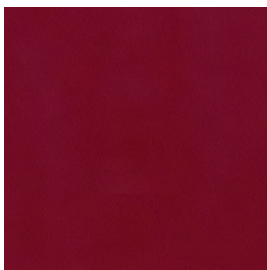
Dark Grey



Volcanic Grey



Olive Grey



Vintage Red



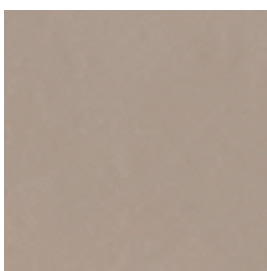
Carrot Orange



Spring Yellow



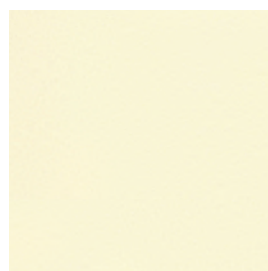
Blue Lake



Mushroom Brown



Liqueur Cream



Sandy Cream



Stone Cream



Students Accommodation



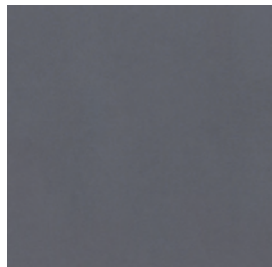
Offices and Commercial Buildings



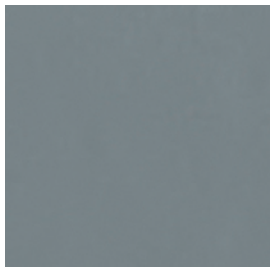
Schools



Medical Applications



Silver Grey



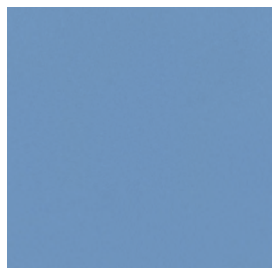
Dove Grey



Garlic Grey



Purple Orchid



Blue Seas



Blue Breeze



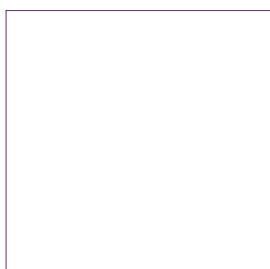
Aqua Green



Cooler Green



Pure Cream



White



Scratch resistant



Easy maintenance



Resistant to aggressive agents



UV light resistant



Durability intensive use

COLOUR DISCLAIMER:

Although every effort has been made to digitally represent these colours, due to variations in photography and printing techniques, the colours shown in this literature are only for reference and a sample should be requested before making your final selection.

CONTACTS

Vicaima

Indústria de Madeiras e Derivados, S.A

Apartado 9. 3730-953 Vale de Cambra

Portugal

T. +351 256 426 300

E. vicaima@vicaima.com

www.vicaima.com

